

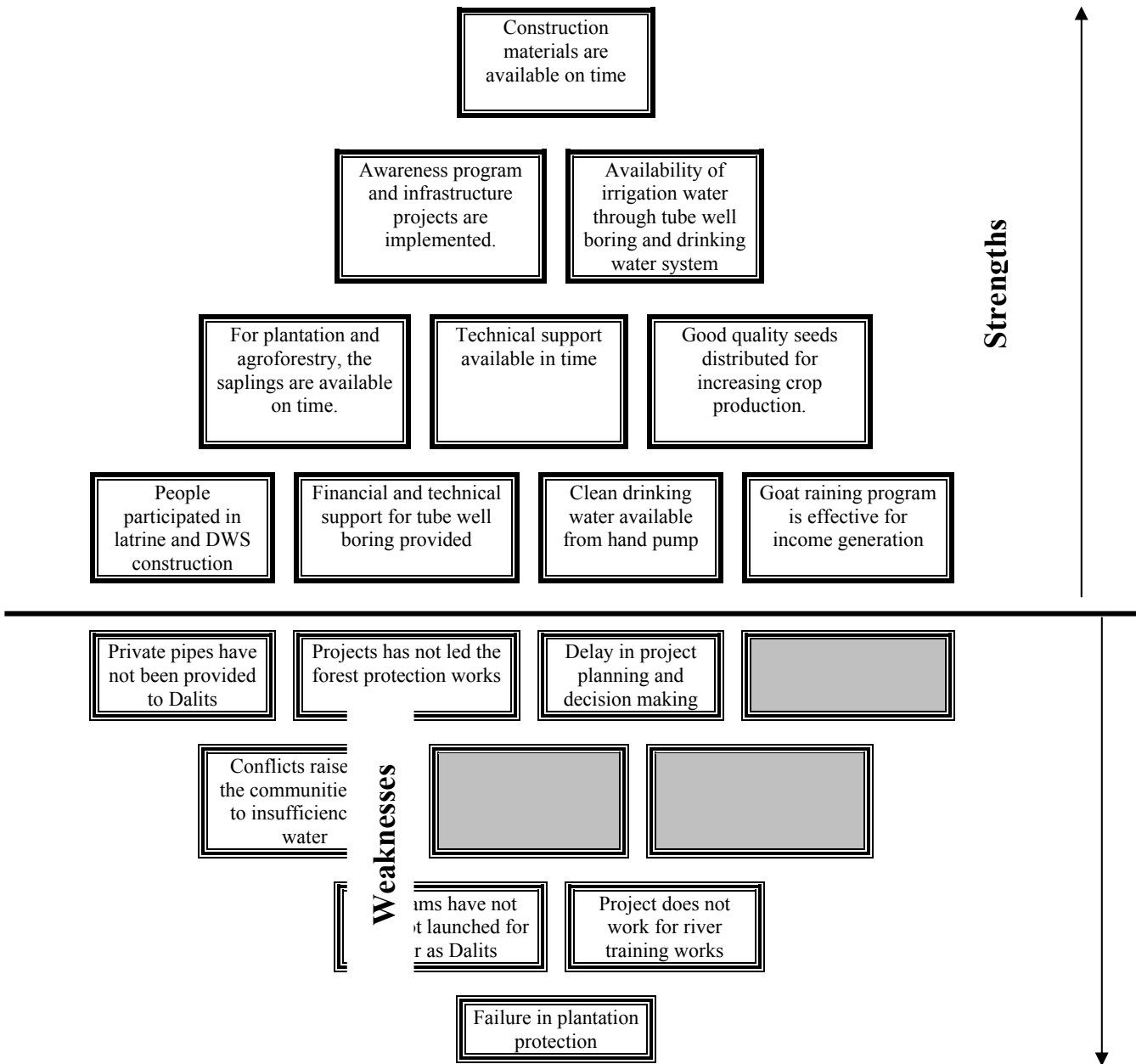
Annex 5. 2 Evaluation of Project Support System

Under the project support system the following areas can be covered.

- i. Administrative support
- ii. Financial support
- iii. Logistic support

The facilitators should identify the areas that have to be analyzed. Since the evaluation depends upon the nature of project, it cannot be generalized. Administrative and financial support systems can be lumped together for analysis. This depends upon participants' choice.

An Example of Diamond Ranking



Source: Community Evaluation Report, Ranjha Bij Tole User Committee, Buffer Zone Development Project, 14-15 June, 1999